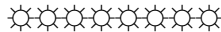


VALE – IVAN SAUER

It is with sadness that we announce the passing of Ivan Sauer, a Life Member of the Society and founding editor of The Courier. Ivan was a keen collector from an early age and was an active member of the Society serving in a number of Executive positions including a term as President. He formed extensive collections of New Zealand and Queensland, which he exhibited with success and was always available to offer advice to younger collectors. As a tribute we publish below an extract from a Courier editorial "What are we collecting, Stamps or the Post" penned by Ivan in March 1987. Needless to say his message remains pertinent today.

"If Stamp Collecting is to remain a rational pursuit into the next century then it is obvious some changes need to occur at the bottom end of the hobby... Many of the great collections combine all the aspects of philately together but, by contrast, most novices start collecting strictly by the catalogue. There is a need to encourage some lateral thinking in the selection process.

The ability to select good commercial covers which reinforce and enhance a collection of stamps seems to be a closed book to many. Yet logically, should stamps ever be considered more important than the purpose they serve? Postal History is not some obscure alternative form of stamp collecting; it is an integral part and something all need a little knowledge of".



TASMANIAN POSTMARKS: DISCOVERIES AND NOTES

George's River



George's River cds on 1894 postcard

A postcard has been found from George's River which represents a significant find in a number of respects. It is the only recorded instance of BN252 (Rated RR) tied *on cover* to George's River. The 1d card is dated 17 January 1894 on the reverse. The card was cancelled BN252 and the George's River cds struck near the base. The mail was routed through Gould's Country and that cds was applied to the left of the stamp area. The card was cancelled on arrival at Hobart (Jan 18). The Post Office at Georges River opened in 1885 and

BN252 was used. The cds was not supplied until the 1880s. Previously a piece was known 'tying' BN252 to a 'portion of date-stamp with long name ending in "R"' (Tas. Vol.I p.77) and thus the tie was tentatively made. The earliest recorded date of the cds is thought to be 23 July 1889. This example (16 Jan 1894) is now the *latest recorded date* of the cds. The town name was changed to Pyengana in 1891 although a new cds was not ordered at the time and the George's River cds continued in use. The Pyengana cds was eventually ordered and has been found in use from 1900 onwards.

George's River is approx. 27km west of St Helens. Gould's Country is closer, about 15km west. The transit suggests that the mail was routed from outlying areas to St Helens for onward transmission.

Hobart Ship Letter in black (1859)



Neil M Russell reports a cover from Hobart to South Australia bearing a 6d Dull Lilac imperforate (SG40) cancelled by barred numeral "62". The cover is dated at Hobart 19 January 1859 and backstamped Adelaide (30 January) and Morphett Vale (31 January). The cover unusually is struck with the Hobart Outwards Ship Letter marking in black instead of red. This is the only example recorded to date on a complete cover. An example has been seen on piece dated 2 June 1858.

'Orrville' postmark on Pictorial auctioned

Only four examples exist of the Orrville postmark on Pictorial stamps and it is recognised as one of the most difficult of the RRRR postmarks to obtain. All of the examples are struck on engraved Pictorials and derive from the one piece which was separated some years ago when it was discovered. All of the strikes are indistinct and blurry. The examples have tended to change hands privately and only one example has previously been publicly auctioned. A strike on a 1d dated 20 Jan 1900 realized \$2100 + 15% commission (totalling \$2,415) in *Charles Leski Auctions* #200 27 August 2002.

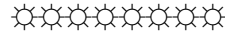
Another of the four known examples (on a 2d - enlarged illustration at right) was offered in *Tasmanian Stamp Auctions* sale of 8 November 2008. Estimated at \$1500 the postmark realised \$1600 + 10% commission (totalling \$1760) against competition.



Cuckoo Valley



A Telegraph Office opened at Cuckoo Valley in 1925 and closed in 1929. This office used a type 4 cds with large date line (rated RRRRR). Avery & Hardinge record five strikes only, four of which were struck on the last day. One example from the last day dated 14 September 1929 was offered in Torsten Weller's postal auction #30. The strike on a KGV 1½d Red (lot 412) was estimated at \$400 and realised \$1375 (including GST) which is believed to be a record price for a Tasmanian 'Commonwealth period' postmark.

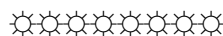
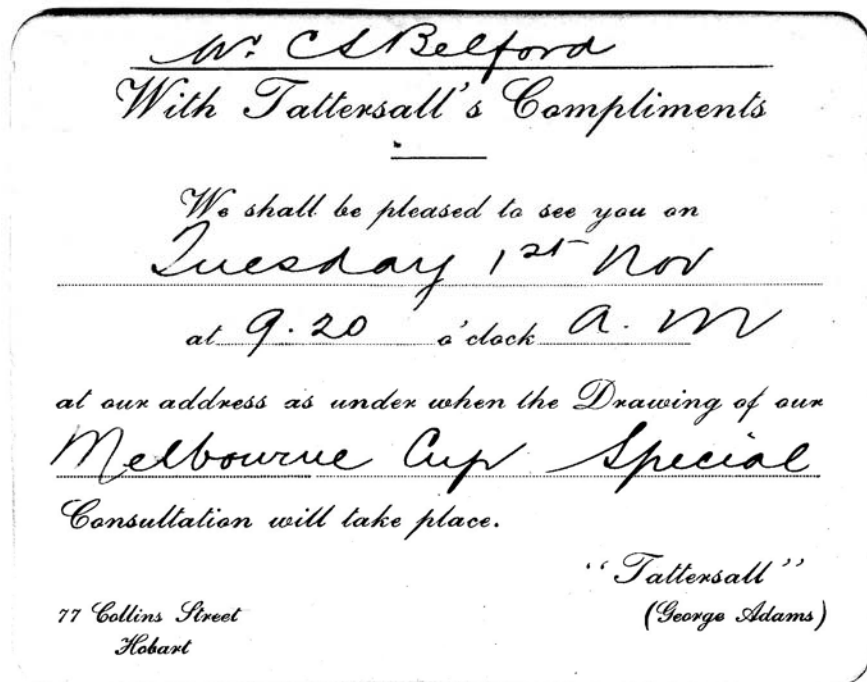


TATTERSALL'S 'MELBOURNE CUP' DRAW INVITATION

Colin Salt

Reproduced below is an illustration of an unusual Tattersalls survivor.

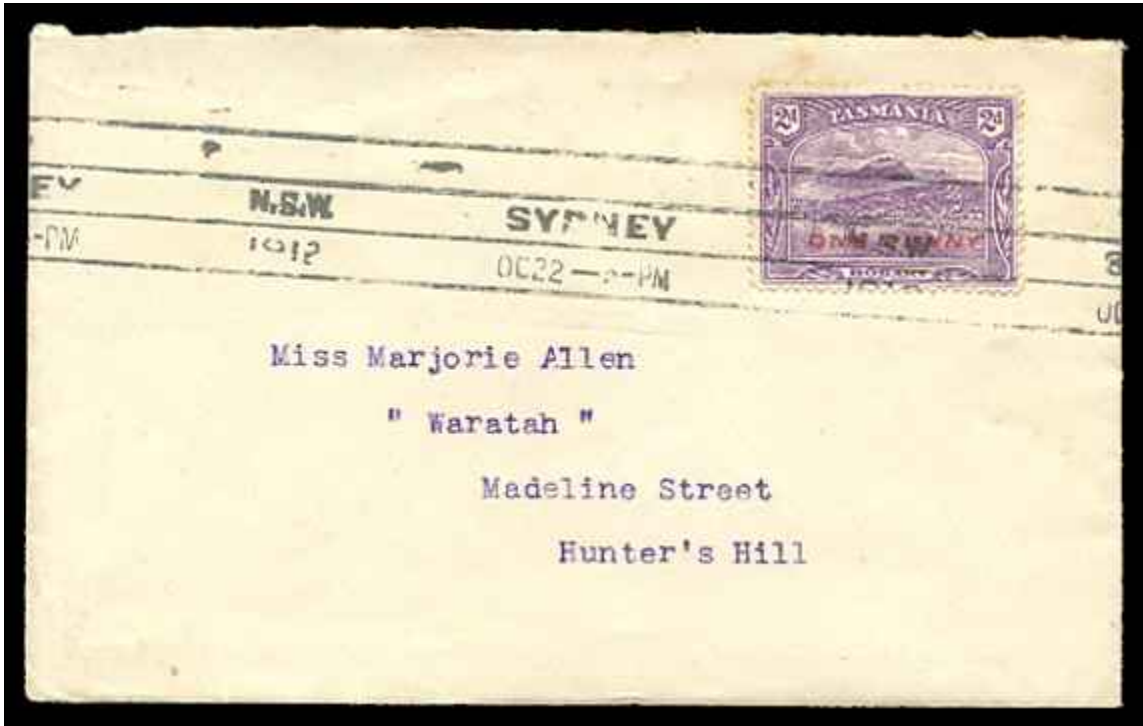
No year is shown on the invitation but C S Belford was manager of the Imperial Coffee Palace at 138 Collins Street from 1917 to 1929.



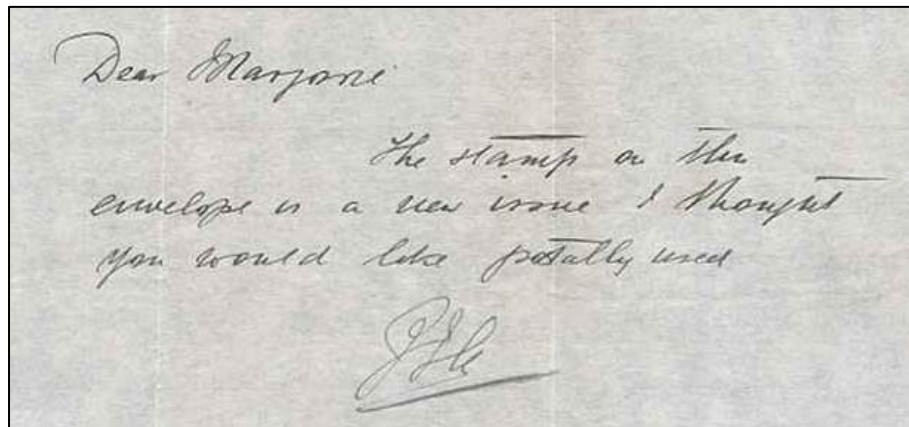
1d ON 2d PICTORIAL: FIRST DAY OF USE DISCOVERED

John Shepherd

The first day of use of the 1d on 2d pictorial overprint has been the subject of discussion in recent issues of *The Courier*. A First Day Cover dated 22 October 1912 prepared by Sydney stamp dealer *Fred Hagen* has been found. To put the matter beyond doubt Hagen included a note stating it was the first day of use of the stamp. Hagen's note reads: "Dear Marjorie, The stamp on this envelope is a new issue I thought you would like postally used [initials]". Adhesives were available for interstate use after 13 October 1910. This cover confirms that stock of the 1d overprint was sent to Sydney for sale on the first day of issue.



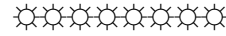
'One Penny' overprint on 2d – First Day Use 22 October 1912 by Fred Hagen, Sydney



Hagen's note accompanying the FDC



A used block of four has also been found by Malcolm Groom cancelled at Hobart on 22 October 1912. Both of these discoveries accord with the date that the stamp was placed into stock by postal authorities.



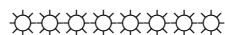
AN UNUSUAL ITEM FROM THE SMITH CORRESPONDENCE

Patrick Reid FRPSL FBSAP

While checking through a bag of unremarkable covers, I came across the item shown. It is a bit grubby, but it counts as missent mail. It is an envelope from 'The Bank of Australia' (embossed on flap) to Mrs. Smith. The 2d Pictorial is cancelled FE 25 1907 at Launceston with time code 'T'. Despite the late time, it is backstamped at Forth on 25th as well.



The manuscript note says "Rec'd today 28 sh[ou]ld have been rec[eived]. 26[th], boy carried it on". This suggests that the delivery boy left it at the wrong address three days after it reached Forth, and carried it on to the Smith residence. February 25th was a Monday, so there is no question of weekends intruding. Presumably annotated so that the delay was not attributed to the person who sent it on. An unusual item.

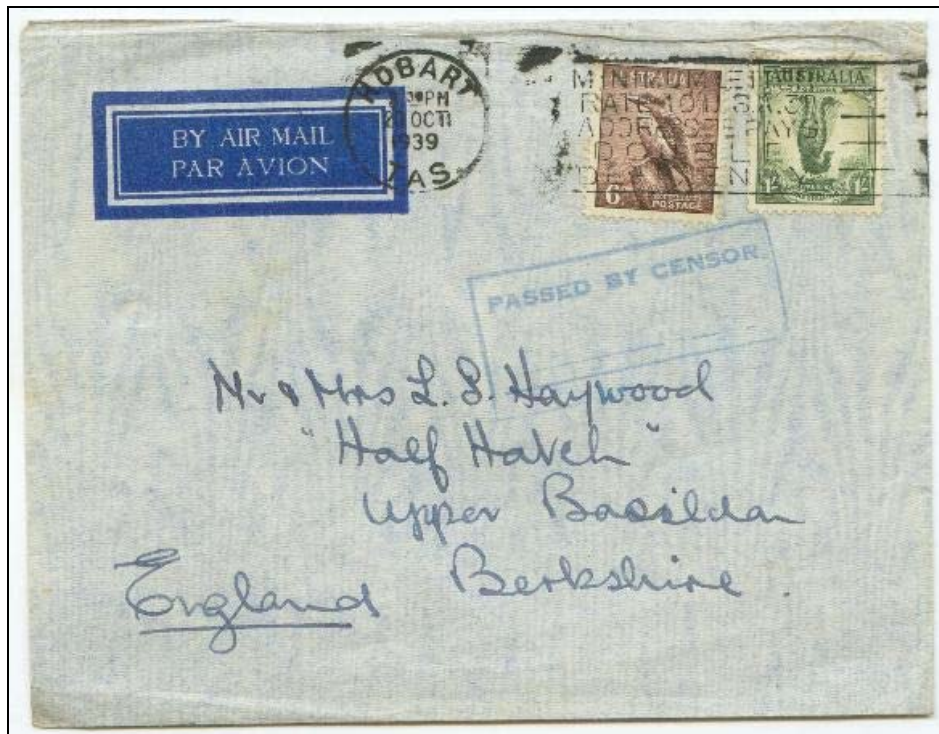


HOBART WORLD WAR 2 BOXED CENSOR CACHET

Torsten Weller

The following two covers show the use of a boxed PASSED BY CENSOR cachet at Hobart in the early stages of World War 2. This usage pre-dates the later use of diamond-shaped PASSED BY CENSOR cachets in conjunction with re-sealing tape bearing the number "6" (Tasmania being the 6th Military District). The boxed cachet is quite different to the later diamond cachets, especially in that it has a dotted line below the inscription intended presumably either for the name of the censor or the date to be inserted, but none of the strikes seen have anything written in this space.

The first item is a cover sent airmail from Tasmania to England franked with a 1/- Lyre Bird and a 6d Kookaburra tied by a Hobart slogan cancel of 20 October 1939 paying the 1/6d war-time airmail rate re-introduced on the outbreak of WW2 in September 1939 after the 5d Empire Airmail Scheme rate was discontinued. The cover shows a strike of the PASSED BY CENSOR boxed cachet applied in Hobart in blue on its face. This cachet was in use from September 1939 and has been seen struck in blue on other items originating from Hobart.



Hobart 20 October 1939 - PASSED BY CENSOR in blue

The second item is a Great Britain KGV 6½d red Registered Letter sent airmail to Tasmania with KGV 1/- brown and 1½d brown added tied Registered Truro oval datestamps of 2 October 1939. It arrived in Melbourne on 17 October 1939 and in Hobart later on the same day as evidenced by the datestamps on its face. This item has the same PASSED BY CENSOR boxed cachet applied in Hobart on its face, but this time struck in red.



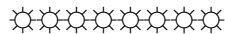
Hobart 17 October 1939 – PASSED BY CENSOR struck in red

There is no evidence that either item was in fact opened and inspected by the censor, so the cachet apparently indicates that the items have been passed for transmission without inspection, no doubt influenced by the fact that both items contained correspondence with Great Britain.

It is interesting to speculate whether the colour used for the cachet is of any significance, perhaps with blue for use on out-going mail and red on in-coming mail, or whether the colour used simply depended on what was to hand at the time. If the colour used is indeed random, it is quite possible that the cachet exists struck in colours other than red and blue.

Any further information about this cachet, other dates of use and colours seen would be appreciated.

Torsten Weller is a specialist postal history dealer based in Melbourne, Australia and can be contacted through his website www.torstenweller.com

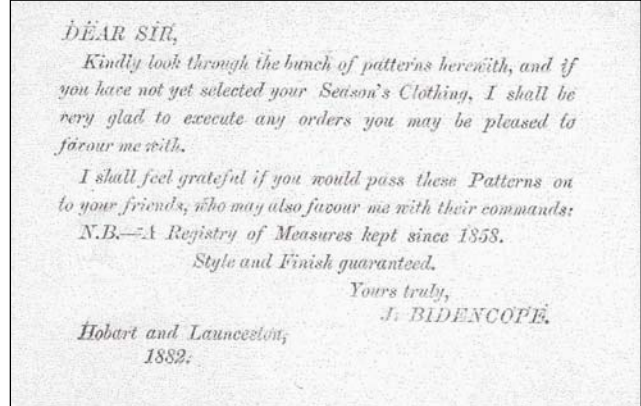


PRIVATELY OVERPRINTED TASMANIAN POSTCARDS

Neil M Russell FRPSL FBSAP

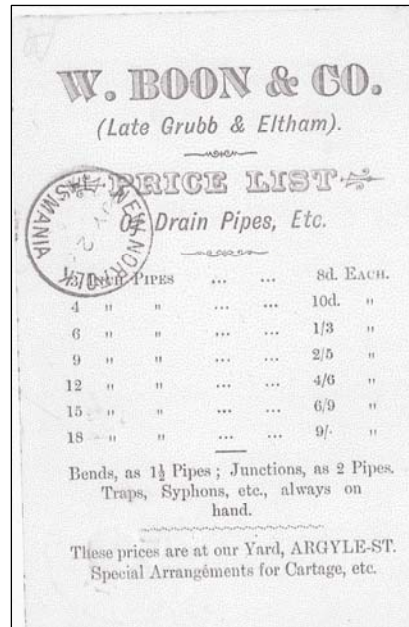
Further to the article in *The Courier* #45 I can record some additional Tasmanian postal cards overprinted on the reverse.

1882 Local Lithographed 1d QV postcard



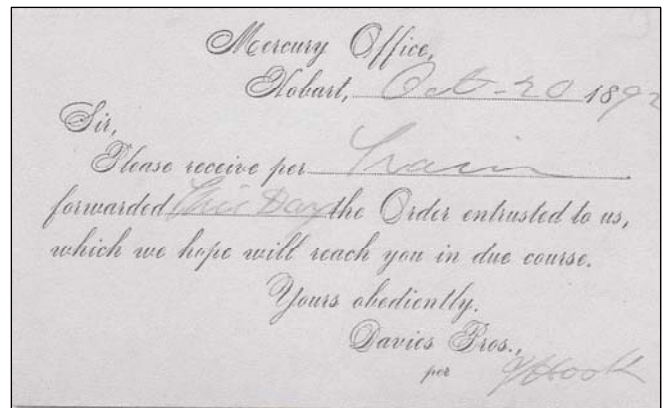
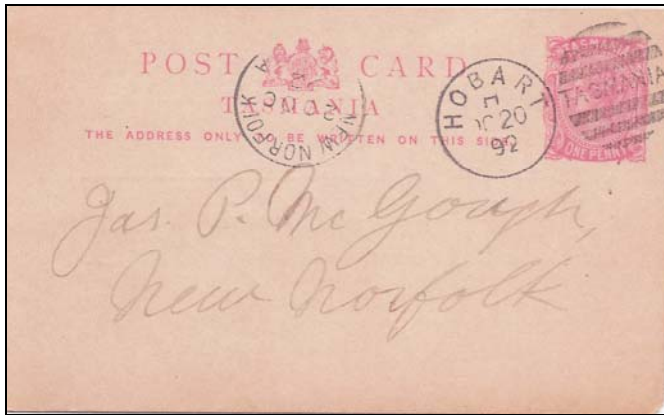
Overprinted contemporaneously by Bidencopes but unused. Updated with embossed ½ d Orange (from 1891)

1d Red Embossed card

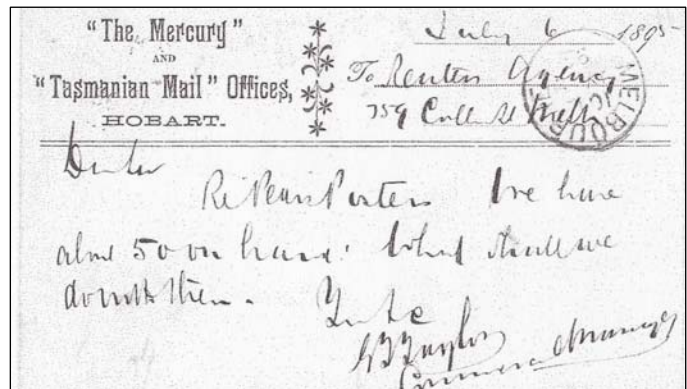


1d Red Embossed PTPO on postcard (in use from 1891) for *W. Boon & Co.* Printed-to-Private-Order postcards from the Colonial period are rare. Readers can refer to Bill Lloyd-Smith's article in *Philately from Australia* (June and Sept 2002) for another 1d PTPO card for Webster's used at Hobart in 1911 and associated regulations.

1d Sideface postcards

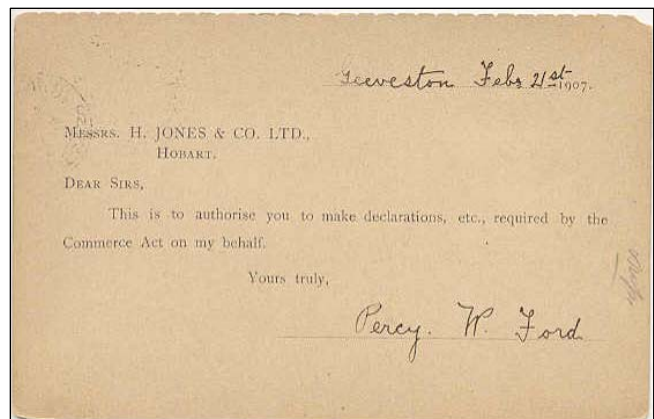
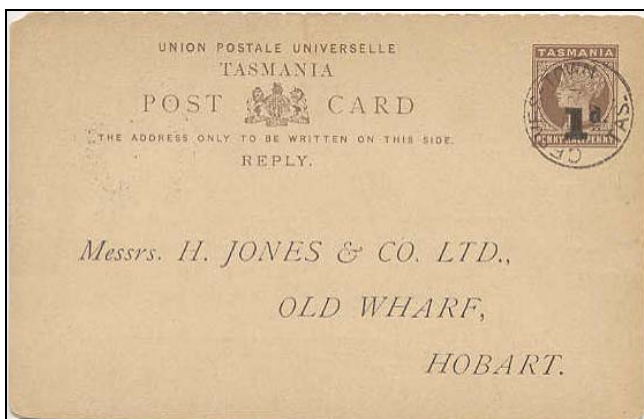


Mercury Office used 20 October 1892.

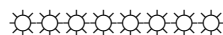


The Mercury and Tasmanian Mail Offices used 6 July 1895.

1905 Penny Halfpenny QV Reply Card opt. "1d"



Courtesy of Ross Ewington I can record an example of the Reply half overprinted for *Henry Jones & Co.* used at Geeveston on 21 February 1907 (Ingles type #C9).



"WILLS" PRIVATE OVERPRINTS ON TASMANIAN REVENUES

Patrick Reid FRPSL FBSAP

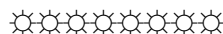
The discovery of private overprints for Wills Ltd does not appear to have been previously recorded in The Courier. The overprint consists of the words "W. D./H. O.WILLS/(AUST)/LTD." Inside a box, applied in purple ink. The handstamp was possibly made of rubber. The handstamp very neatly matches the size of the platypus issues which leads to speculation that the handstamp was specially made for these revenue stamps. WD&HO Wills were national tobacco manufacturers and merchants and it is likely that private handstamps made by the company could be found on interstate revenues.



The values found to date are the 4d Yellow, 5d Apple Green and 6d Red Platypus rouletted issues unused without gum. I have also recorded the 5d Apple Green used on small piece but without additional cancellation which leads one to suspect that these revenues were applied to document and not cancelled with pen. The 5d Apple Green has also been found with the handstamp inverted, again without gum.



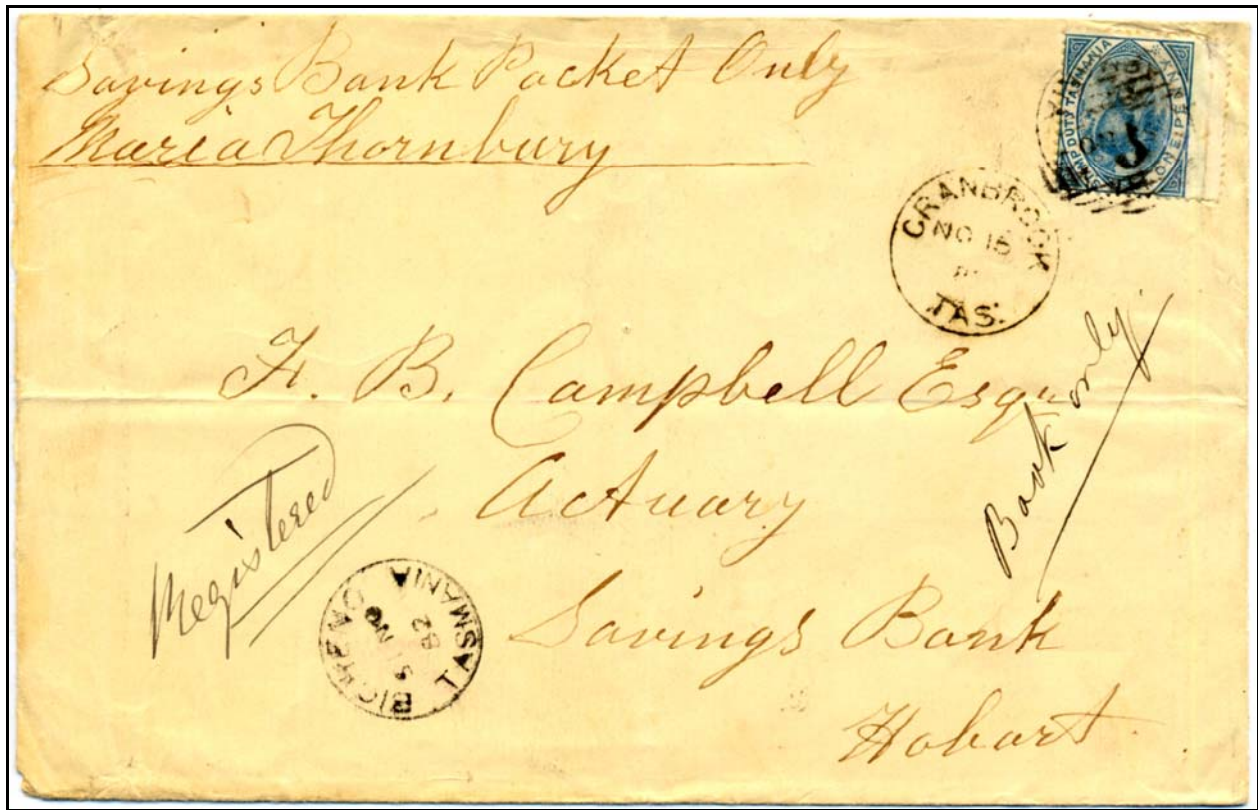
WD & HO Wills handstamp inverted on 5d



EARLIEST RECORDED DATE FOR A REGISTERED SAVINGS BANK PACKET?

David McNamee

A special concession rate for posting savings bank packets became effective 1 November 1862. The rate was the same for other Printed Matter or Packet Rate material of 1d per 4 ounces. The 1881 Postal Act (45 VICTORIA 13) added free registration services for savings bank packets, effective 1 January 1882. To qualify as a savings bank packet, the packet had to be clearly marked "Savings Bank Packet Only" and signed by the account holder (if mailing to the bank) or the bank's authorized representative (Actuary, Secretary, Manager). Registered savings institutions, such as Friendly Societies and Building Societies are included in the Act and Regulations, and the endorsements would be similar. Those packets qualifying as Savings Bank Packets were to be registered by the postmaster without further charge. Thus, a special concession rate of 1d covered both postage and registration fees.



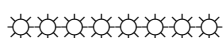
1882 (Nov 15) registered Savings Bank Packet Bicheno – Hobart at 1d rate

The packet illustrated was mailed by Marian Thornbury in Bicheno on 15 November 1882 to the Actuary at the (Postal) Savings Bank in Hobart. The platypus 1d (scarce as a single on cover) is canceled BN3 at Bicheno. The stamp paid the Savings Bank Packet Rate, and the packet was properly endorsed with contents and sender. It is marked "Registered" and "Book Only" in manuscript by a different hand than the sender; however, there is no registration number on the packet. The packet traveled through Cranbrook on its way to Hobart. Cranbrook added its own c.d.s. to the front of the cover as a transit mark. A Hobart receiving c.d.s. of 17 November 1882 is on the back of the packet.

It may be that the packet went to the Hobart Savings Bank without ever being truly registered. Numbered receipts were given at this time for registered mail, and the number entered on the face of the cover, so it is suspicious that this cover has no number. Errors are not unknown for this type of mail: I have several other savings bank packets that were registered even though they lacked the qualifying endorsements, and one other mailed from a Launceston bank that has no evidence of registration. Some others mailed from country towns received their registration numbers upon reaching Hobart.

It may be that the regulation was still new in 1882, especially to a small country town like Bicheno. Postal workers may not have marked the packet as they did with other registered mail, because they believed that this class of mail was a bit different than regular registered mail.

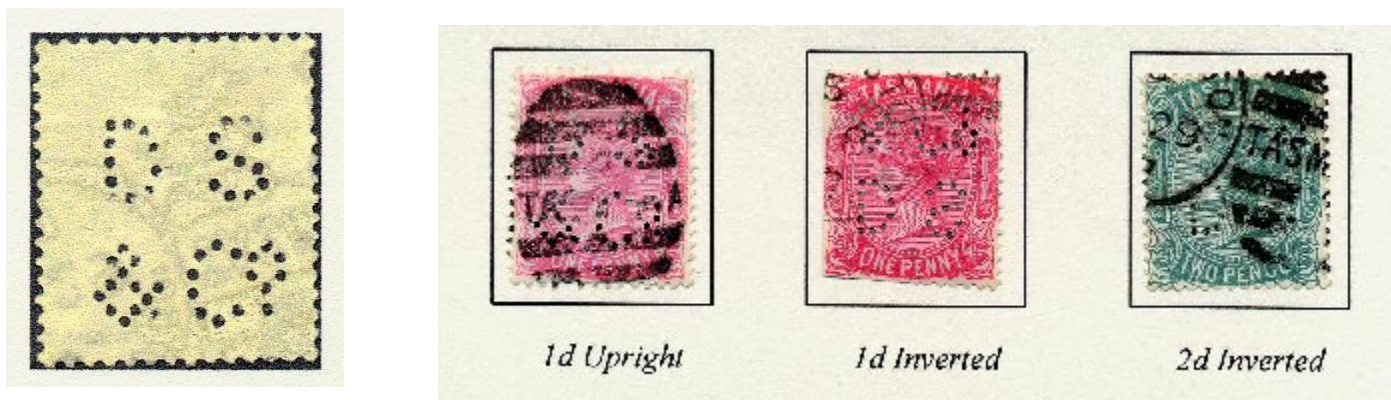
Savings packets are not common, and very early ones such as this 1882 packet have got to be rare. Is this the earliest recorded date (ERD) so far? I would enjoy hearing from others who might have an unusual packet or an earlier one. Contact me at dmcnamee@aol.com.



DODGSHUN SONS & CO, LAUNCESTON PERFINS

[David McNamee & Ross Ewington](#)

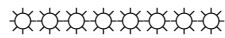
The source of the rare "D S & Co." perfin occasionally found on Tasmanian 1d and 2d Sideface stamps has previously been attributed to David Slater & Co. of Zeehan. A recent study has concluded that the perfin was in fact used by William Dodgshun and Sons of Launceston (Matthews, J. 'William Dodgshun and Sons', *South Pacific Perfin Bulletin*. No.72, Jan 2006. pp.4-7; No.73, April 2006. pp.5-6). Dodgson & Sons operated an importing and wool broking business in York St, Launceston between 1871 and 1922. We have recorded five examples which are illustrated here although there could be further copies to be identified. The perfin is recorded on both the 1d and 2d Sideface stamps. Of note is the fact that the perfin is found in 'normal' and 'inverted' positions. This suggests that the perfin was applied in a single punch on 'folded-over' strips of stamps. The date range found is 1897-1899. We have seen examples with Launceston postmarks only although John Matthews records an example postmarked at Campbell Town.



The "D S & Co." perfin type and examples used on the 1d and 2d Sideface (McNamee)



"D S & Co." perfins on 1d Sideface

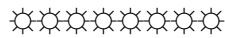


TASMANIAN ADVERTISING COLLAR

[John Shepherd](#)



Printed advertising collars are scarce on Australian States covers and none appear to have been recorded from Tasmania. A piece bearing an advertising collar from Walch, Birchill & Sons surrounding a 2d Green Sideface stamp (DLR printing) has been found and is illustrated. The collar appears to have been especially printed to fit the Sideface stamps. For background information on advertising collars see the article by A.E. Orchard in *The Courier* #2.



"WHAT HAPPENED TO THAT"? PATRICK REID'S TASMANIAN INSTRUCTIONAL MARKINGS AUCTIONED

Patrick Reid, an overseas member of the Tasmanian Philatelic Society, consigned his International exhibit collection of Tasmanian instructional markings on cover to *Prestige Philately* for auction on 17 October 2008. The exhibit collection was the culmination of two decades of research building on the published information in Tasmania Volumes I and II. Patrick's exhibit achieved an international Gold at St Petersburg 2007. Prior to that it had achieved a gold at Westpex (2003) and a gold in the international class in the UK National competitions twice (1997 & 1999) and the reduced version (5 frames) received a Large Vermeil at Pacific Explorer. A strong feature of the collection was the number of instructional markings not previously reported in the literature. Strong results were reported for significant covers. The prices listed below do not include buyer's commission.



1853 "To Be Delivered Free of Postage" – realized \$4200



1863 "Insufficiently Stamped on 9d rate cover – realized \$2600



1857 "Not Stamped" on cover bearing Victoria 6d Woodblock – realized \$1500



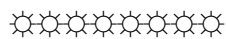
1871 registered parcel front marked "Too Late" with 4-colour franking – realized \$3400



1870 cover "Insufficiently Paid for Brindisi Route Deficient Postage 3d" – realized \$4400



1908 cover Zeehan to Hobart at 2d rate plus 1d late fee with Zeehan marking "Loose Letter _d To Pay" – realized \$525

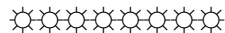


THE TASMANIAN PHILATELIC SOCIETY LAUNCHES WEBSITE

The Tasmanian Philatelic Society has launched its own website which can be viewed at: <http://www.tps.org.au> The website aims to encourage interaction between society members, especially those who can not attend monthly meetings in Hobart. Current features include:

- Annual Program;
- *The Courier*, which can be viewed in full colour;
- exclusive content including articles written by philatelic experts;
- a synopsis of recent displays with illustrations of material;
- a link to pay annual subscriptions via Paypal;
- downloadable membership form;
- an online census of RRR and RRRR rated postmarks on pictorials.

The site will be continually developed and further features will be added over time. Members are requested to provide an email address to the TPS Secretary for website updates, TPS newsletters and other philatelic news: pamtony2@bigpond.net.au Members are strongly encouraged to use the Paypal facility to pay their annual dues.



LAUNPEX 2009

The Launceston Philatelic Society will be holding a stamp exhibition - *Launpex 2009* - from 30 October - 2 November 2009. The Exhibition will be held at the Max Fry Hall in Trevallyn, which is only 5 minutes from central Launceston. Members may be able to plan their holidays around this event. A prospectus for entrants will be available from the TPS. Exhibition souvenirs are being planned – a set of 8 specially-produced envelopes featuring the 1899 Pictorial stamps will be available for sale at the exhibition. More news will be reported when it is to hand.



Exhibition venue: the Max Fry Hall in Launceston

Competitive Exhibition

Launpex 2009 is a National One Frame Exhibition organised by the Launceston Philatelic Society in conjunction with the Tasmanian Stamp Council under the auspices of the Australian Philatelic Federation. A multi frame State Class exhibition will be run in conjunction.

Participation is open to all exhibitors however entries will only be accepted from Australian residents or persons who are members of a philatelic society in Australia.

Display frames for Launpex 2009 hold fifteen (15) sheets [3 rows of 5 sheets]. State Classes available [3 to 8 frames] include Traditional, Postal History, Postal Stationery, Revenues, Aerophilately, Astrophilately, Maximaphily, Thematics, Social Philately, Open Philately and Youth.

Entry Fees

Entry fees are \$30 per frame for each entry of 15 sheets in the National One Frame Competitions. Entry fees for State classes will be \$20 per frame. Frame fees and return postage (where applicable) must accompany the entry form.

Closing Date

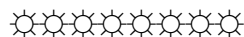
Entries close on 7 August 2009.

Contact

For more information contact The Secretary, Launpex 2009, P.O Box 1055, Launceston, Tasmania, 7250. Tel: (03) 6344 5676.



Launpex 2009 Exhibition envelope



THE 'SOMERSET, RIVER CAM' PRIVATE POSTMASTER'S HANDSTAMP

John Shepherd

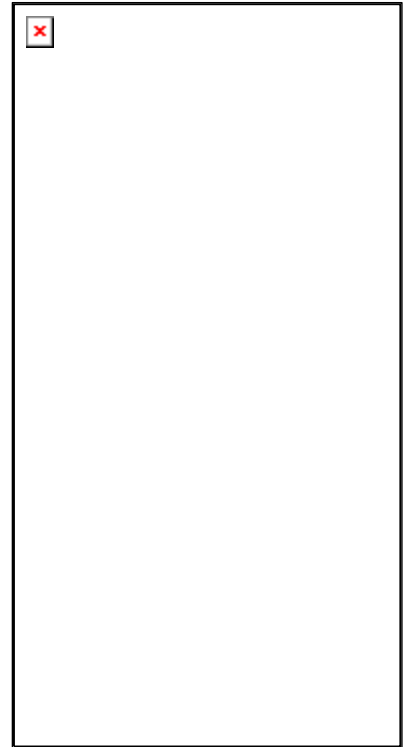
This article records the known examples of the 'Somerset River Cam' post office handstamp.

The town of Somerset is located at the mouth of the Cam River 'on the main line of road between Emu Bay and Table Cape'. Somerset is 7km east of Burnie. The area was historically known as 'The Cam'. The Post Office first opened on 5 November 1864 and was allocated barred numeral '110' in the second allocation of numeral obliterators.¹ The letter of appointment of the postmaster Thomas Dodd Wragg dated 2 November 1864 is quoted in full by the late Paul Edwards in a very useful article on this post office.² The letter of appointment refers to the ordering of the 'obliterating stamp and seal of office' (ie. Barred Numeral and a Crown seal) and is important as it confirms that no cds was supplied upon opening of the office.

Wragg was educated in London and was by trade an engraver on wood, draughtsman and artist. It is reported that he held a good position with the *London Illustrated News*. In 1860 Wragg and his wife Emily and their ten children sailed to Australia by the *Great Britain*. The family first settled at Elliott but Wragg "deciding he was not made out to be a farmer", purchased a one acre block and built the first house in Somerset. The Wragg home "Alpha House" was situated on the corner of Simpson Street and the Esplanade became the first shop and Post Office in Somerset. Also built on the family block was the building that was to act as the first church, school and meeting place. The building works were carried out by ship builders working in the district.³ Wragg was listed as the first resident in the town, appearing in the *Hobart Town Gazette* as house owner and resident on 22 April 1862.



The private handstamp consists of the words 'Somerset/River Cam' in sans serif capitals, engraved in two lines with letters 3mm high and overall dimensions of 22mm x 8mm. It was probably engraved from wood. What factors led to the production of a private handstamp? From 1865 (until 1874) only those offices with money order facilities were provided with circular date stamps. Somerset did not have money order facilities. Cost was probably a contributing factor with each datestamp costing the Post Office Department between £2 and £2/2/0d. The cumbersome task of writing a long post office name on letters is thought to have provided some impetus for the creation of a labour-saving device.⁴ Significantly, Edwards established after locating and speaking to one of Wragg's grandsons, that Wragg was an engraver by trade and concluded that manufacturing the handstamp would have been a simple task for the postmaster.⁵





“Alpha House” – the Wragg family home and the first Post Office in Somerset [Hean. p.68]

Vol.I (1962) p.14. reported one example only dated 21 August 1866. A second example dated 4.6.74 was recorded by Edwards in 1968 and he reported that a third example owned by Sebastian Earl of London dated 14.12.69. The marking was illustrated in Vol.II (1975) at p.117 although no further examples, other than those reported by Edwards, had been discovered. Thus by 1975, three examples of the marking were known. Six examples of the marking on cover can now be recorded establishing these covers as significant Tasmanian rarities.

Somerset River Cam finally received a cds during 1877 or 1878 reading ‘Somerset.Cam Tas:’. The earliest recorded date is 11.5.1879.

CHALON COVERS

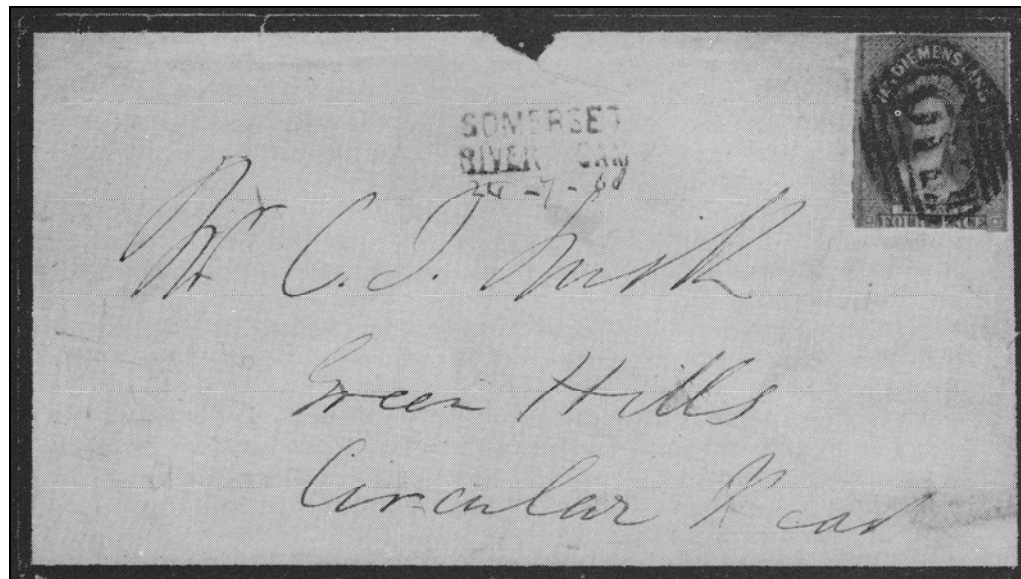
1. SRC - Launceston – 21 August 1866 – 4d Blue perf.10 cancelled BN110.



1866 (August 21) cover from Somerset River Cam to Launceston – the earliest recorded date of the postmaster's private handstamp

The earliest recorded example of the handstamp is dated 21 August 1866. This cover is also of interest from a traditional perspective. Gauge perf 10 stamps were only sold at Walch's outlets in Hobart and Launceston. This stamp, clearly cancelled "110", has migrated to Somerset and is an unusual usage outside of the major towns. It is probable that the sender arrived from a coastal trading vessel from Launceston that frequented the area and used the Walch stamp on correspondence back to Launceston. It is pertinent to note that during the 1860's "Wragg built a wharf in front of his Somerset home and started a trading depot, trading in supplied, produce and timber from the mainland and Tasmanian ports".⁶ The cover is backstamped on arrival at Launceston 23 August 1866. Provenance: Viney.

2. SRC – Circular Head - 24 July 1868 – 4d Imperf cancelled BN110



1868 (July 24) Somerset River Cam to Circular Head

The second cover recorded dates from 1868 and was sent to Circular Head at the 4d inland rate. The stamp is an imperforate 4d Blue which would have been sold at the Somerset post office. Provenance: Groom

3. SRC – Launceston - 14 December 1869 – 4d perf 11.8 cancelled BN52 at Launceston.



1869 (December 14) Somerset River Cam to Launceston – the stamp added on arrival

The third cover was sent to Launceston at the 4d inland rate. The cover bears a 4d Blue chalon pef 11.8 (catalogued 12), unusually cancelled BN52 at Launceston on arrival. The postage was paid in cash (possibly as SRC did not have sufficient adhesives) and the stamp added on arrival at Launceston and cancelled. The word '*cash*' has been written under the stamp. Acknowledgement that postage was paid in cash was required on the face of the letter by the *Post Office Act* 1853 s.XIX when no adhesives were available at the despatching office.⁷ Perf 11.8 stamps were used exclusively at this time at all post offices. This cover is also addressed to "Rosetta" at Launceston. Provenance: Earl; Cress.

SIDEFACE COVERS

4. SRC –Werribee, Victoria - 4 June 1874 – franking ?

This cover shows a manuscript date "4.6.74" in ink under the handstamp. The cover has two strikes of BN110 and is backstamped Launceston (6.6.74) and Melbourne (9.6.74). Provenance: Edwards.

[no illustration available]

5. SRC – Longford - 8 Nov 1974 – 2d Sideface



1874 (November 8) Somerset River Cam to Longford

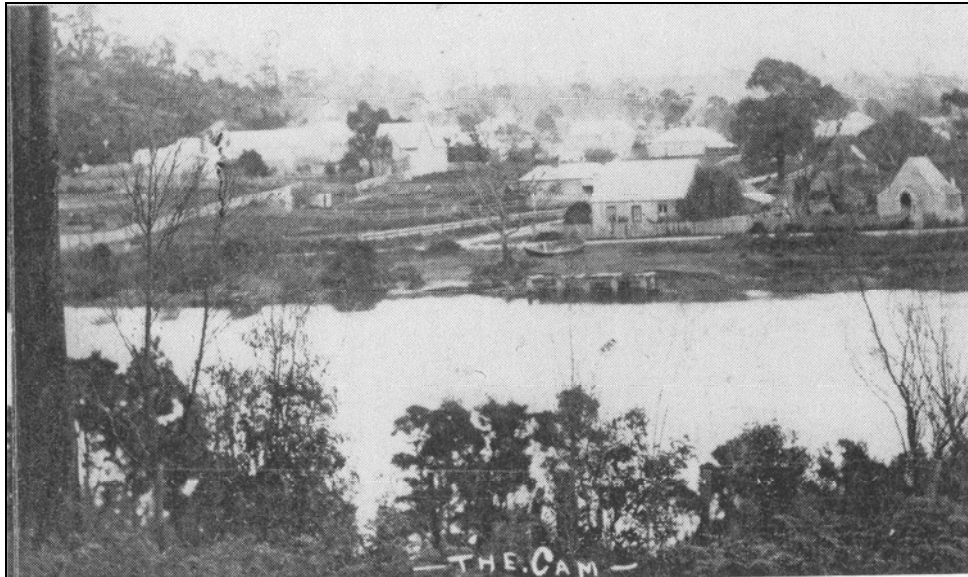
Posted from Somerset to Longford at the 2d inland rate (reduced 1 November 1870). The cover bears a 2d green Sideface (wmk 'TAS') and is also addressed to R.W. Mackenzie but at the *Panshanger* [sic] property at Longford. The private handstamp does not show signs of wear and the letters are well formed. Provenance: Blake

6. SRC – England - 11 May 1875 – 1d sideface x 6

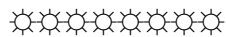


1875 (May 11) Somerset River Cam to England

This is the latest recorded cover with the handstamp. The adhesives pay the 6d per ½ ounce ship letter rate to England via Southampton and are cancelled by four strikes of BN110. Provenance: De Righi; Groom.



Somerset in the early 1900's with Wragg's home, shop and post office on the corner of Simpson Street and the Esplanade. The wharf is shown in the foreground. [Hean]



¹ Tas. Vol.I. p.69.

² Edwards, P.B. 'Tasmania: The Somerset, River Cam Post Office', *PfA*. Sept 1968. pp.68-70. A portion of the letter is also reproduced in Tas. Vol.II. pp.8-9.

³ Hean, A.C. *Somerset The Cam*. Self Published, Somerset, Tasmania, 1992. p.66.

⁴ Groom, M. 'The Private Postmasters' Handstamps of Tasmania', *PfA*. March 1987. pp.4-10.

⁵ Edwards. *op. cit.*

⁶ Hean. *op. cit.* p.67.

⁷ Orchard. Vol.II. p.25. See also the 1853 Regulations, r.15: Orchard. Vol.II. pp.41-42.